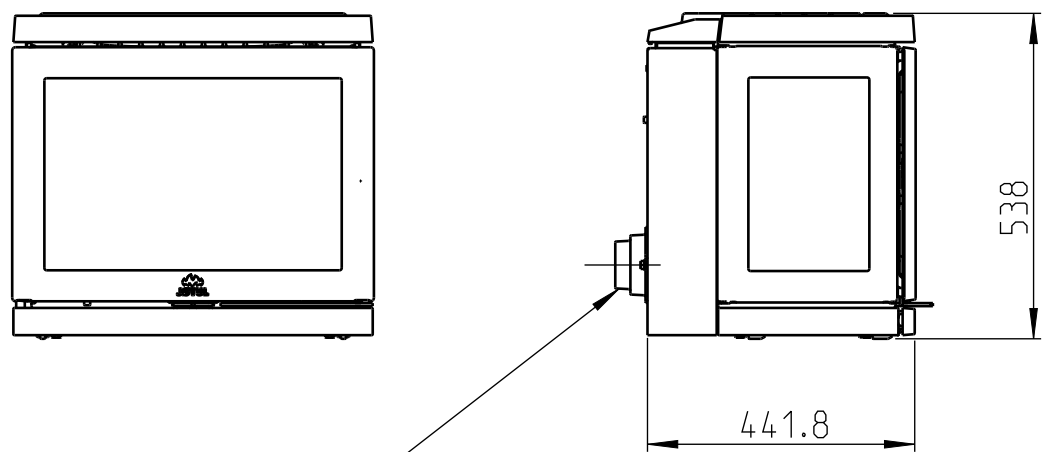
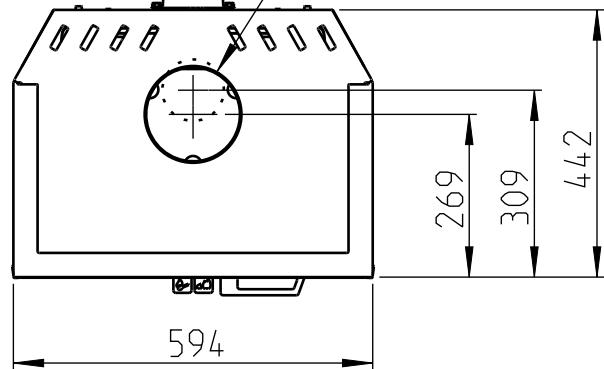


Jøtul F 520 LB

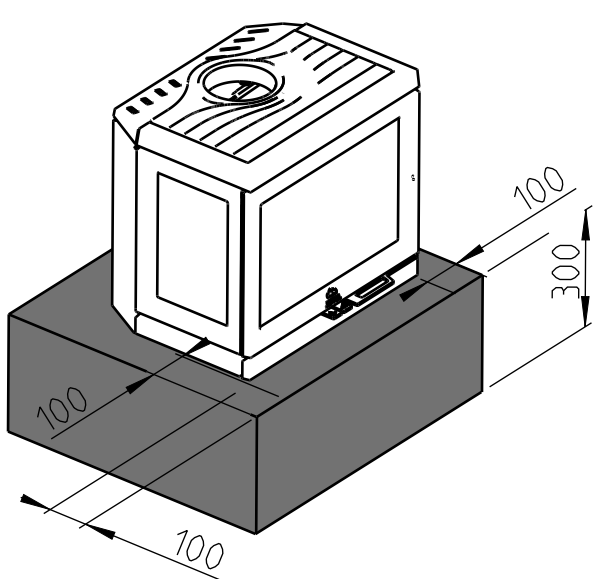


Foro nella parete per il condotto per l'aria esterna Ø80/Ø100

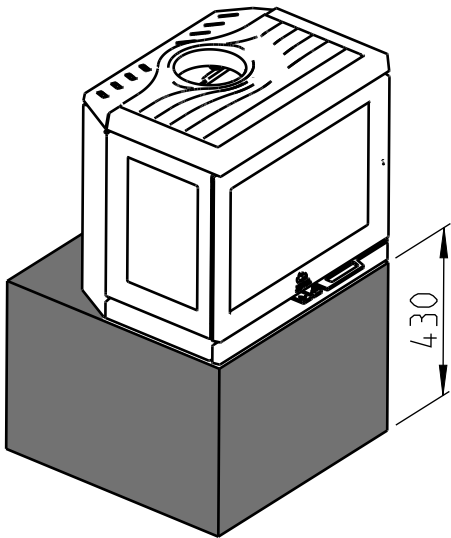
Foro nel pavimento/base per il condotto per l'aria esterna Ø80/Ø100



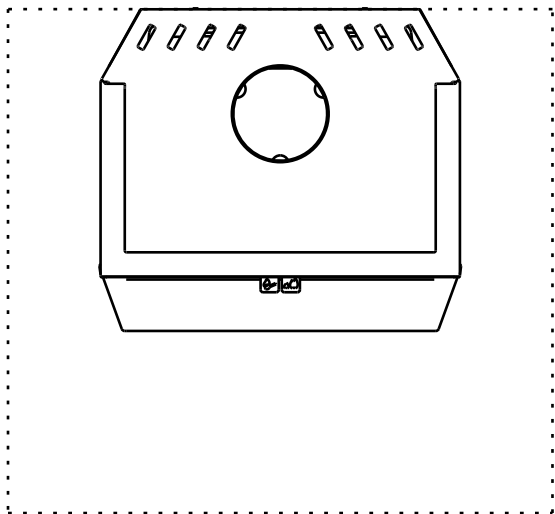
Dimensioni minime della base NON combustibile



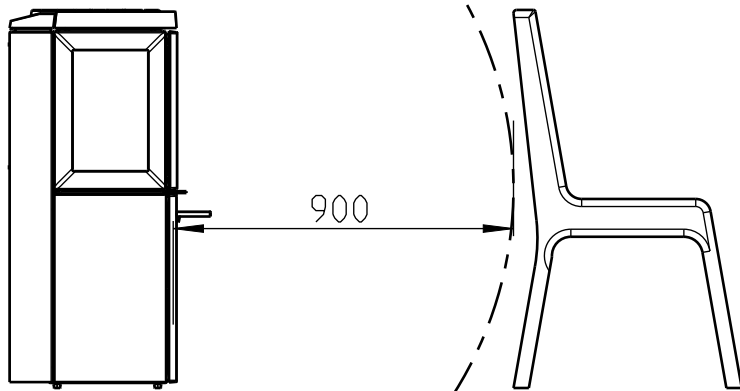
Dimensioni minime con lato / fronte esteso



Dimensioni minime della base



Spazio minimo da mobili/
materiali non ignifughi

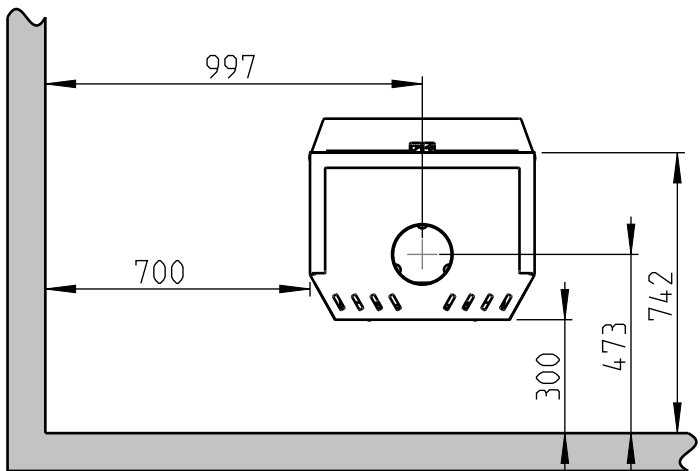
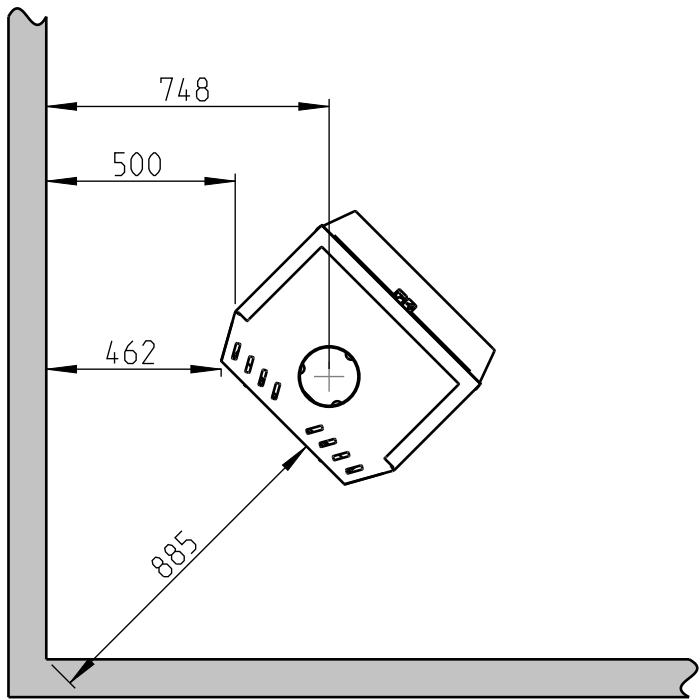
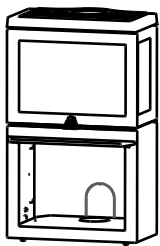


Dimensioni min. per la piastra di protezione del pavimento
X/Y = in conformità alle leggi e alle normative nazionali

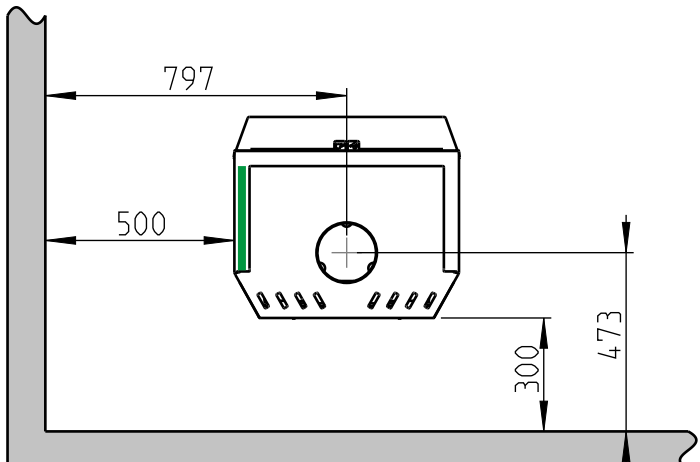
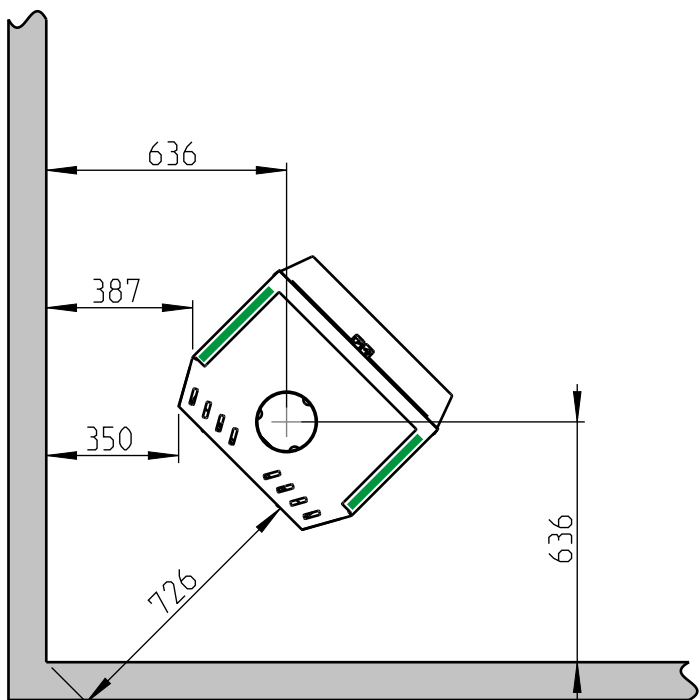
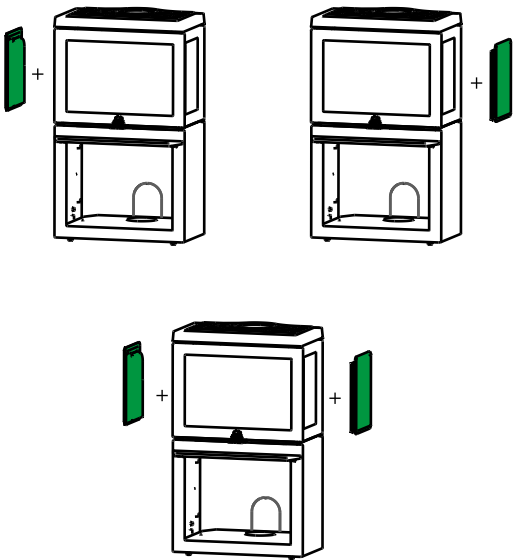
F 520 / F 520 LB / F 520 HT :
Distanza minima dalla parete non ignifuga

Con canna fumaria parzialmente isolata/condotto scarico
fumi rivestito fin contro il prodotto

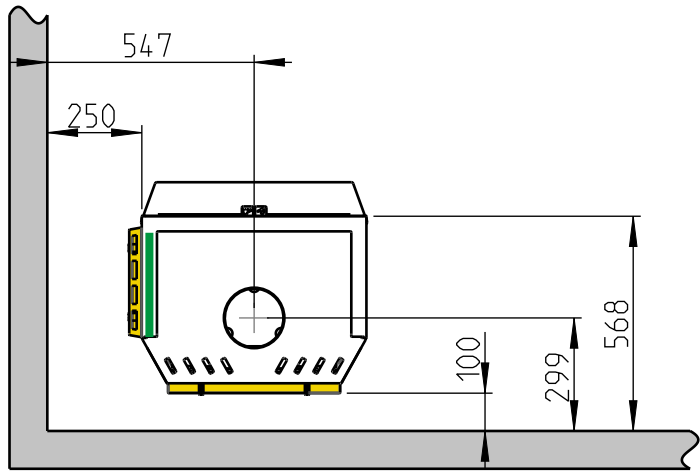
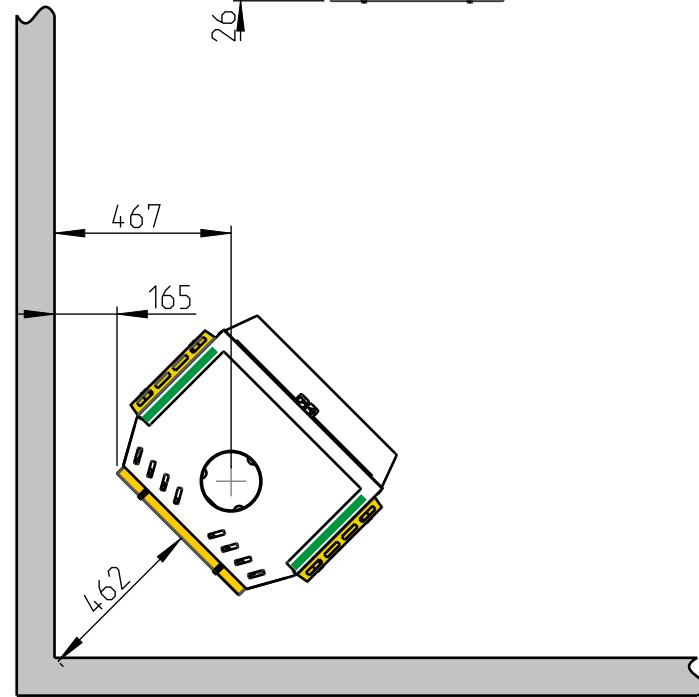
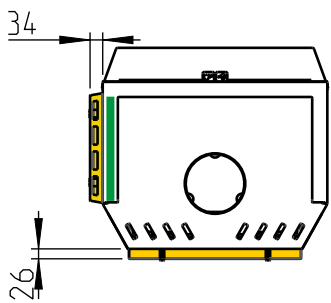
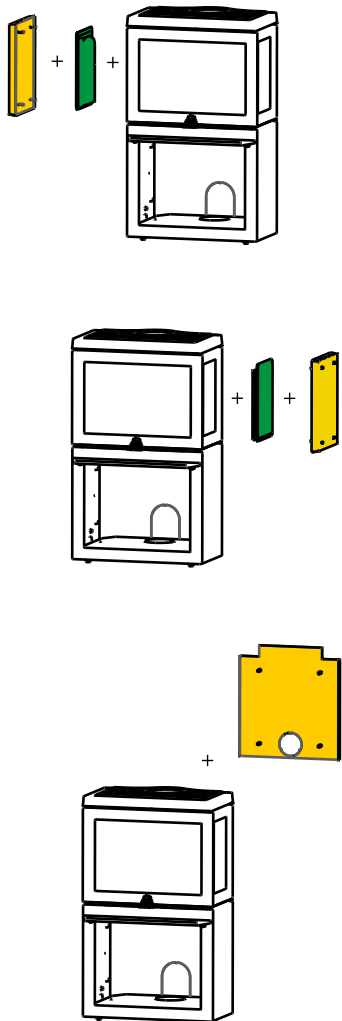
 Parete non
ignifuga

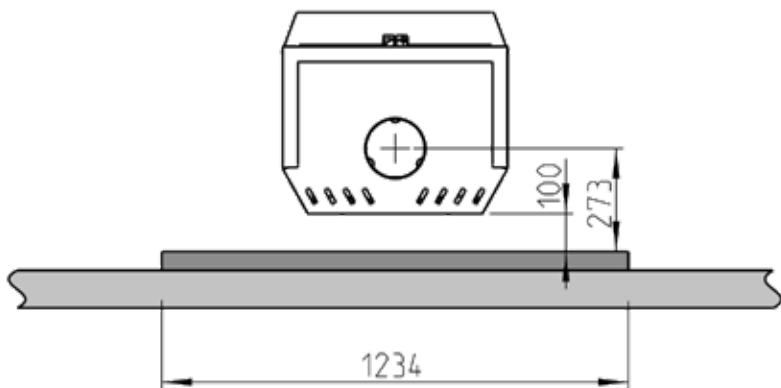
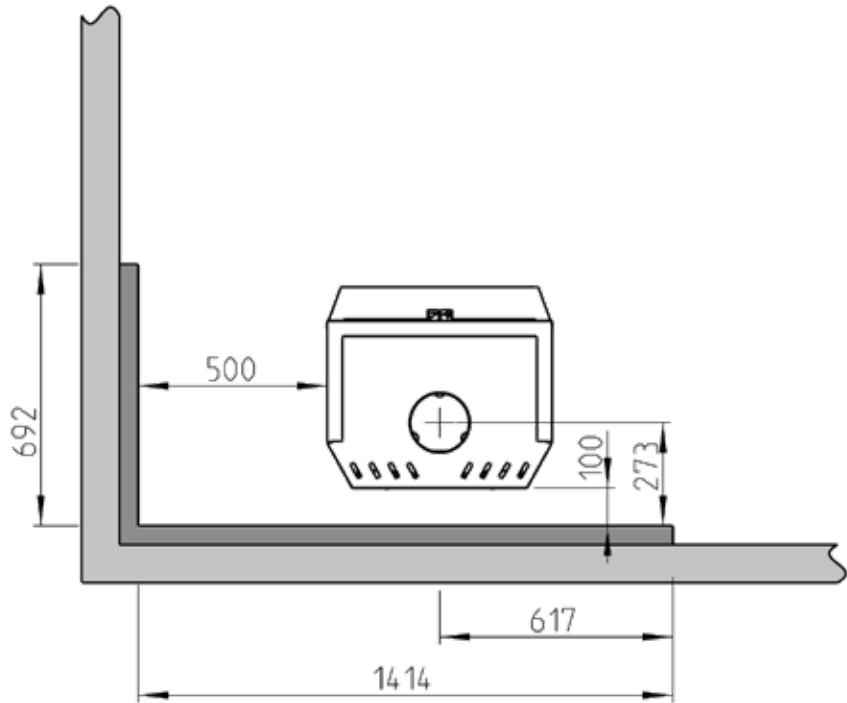
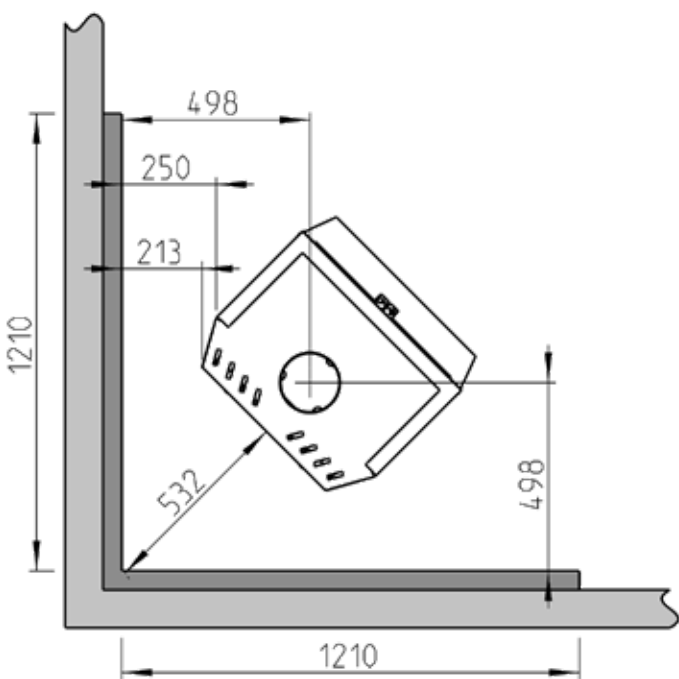
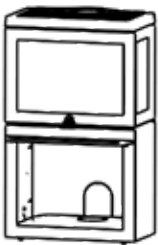


F 520 / F 520 LB / F 520 HT
Con lato in ghisa montato a posteriori



F 520 / F 520 LB / F 520 HT
- Con lato in ghisa e lato con kit di convezione
montati a posteriori
- Con kit di convezione posteriore montato a
posteriori





F 520 / F 520 LB / F 520 High Top:

Con lato in ghisa montato a posteriori

